



scheuch

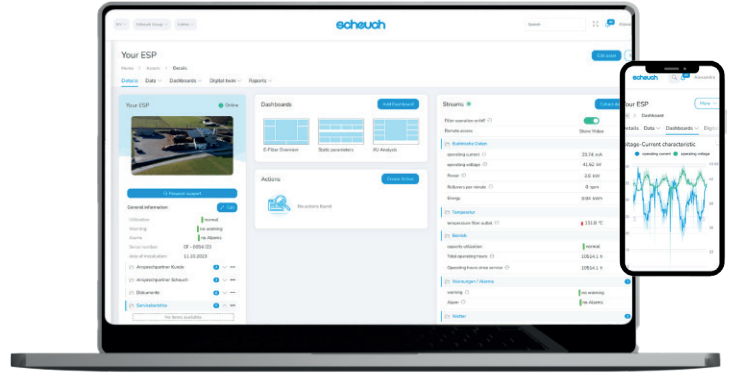
# ScheuchConnect

THE SMART PLATFORM FOR YOUR FACILITY MANAGEMENT

# TRANSPARENCY FOR MAXIMUM AVAILABILITY

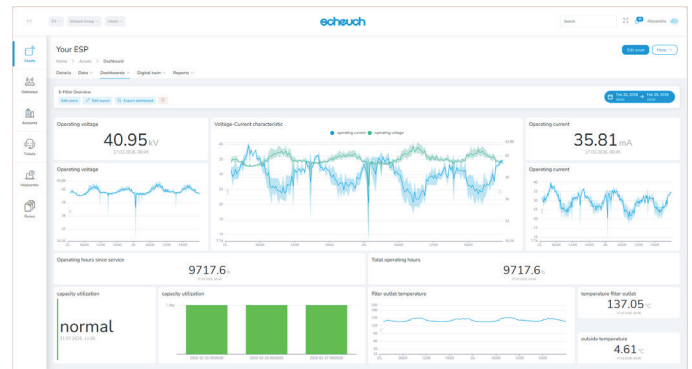
Keep an eye on all relevant operating data with **ScheuchConnect** at all times. You can identify anomalies at an early stage, respond more quickly to incidents and reduce unplanned downtime.

**The result:** greater availability, less effort and maximum control – secure and accessible from anywhere.



## ALL SYSTEM INFORMATION AT A GLANCE

- **Customisable dashboards:** All relevant system information at a glance, whether it be sensor data, utilisation, filter temperatures, performance figures, power consumption or other key metrics.
- **Warnings and alarms:** notifications and alerts are automatically sent directly to your smartphone via push notifications.
- **Access from anywhere:** All data, display modules, documents and contact details are available at any time on your smartphone, tablet or PC.



## EFFICIENT SERVICE AND OPTIMISED PROCESSES

- **Remote maintenance capability:** Service technicians can analyse and support systems remotely, thereby avoiding on-site visits and saving both time and money.
- **Automated reports:**
  - **Customised reports** can be easily generated and used as evidence of relevant operating parameters when dealing with the authorities.
  - **Sensor data in the report** provides a transparent record of the system's actual operation. Time periods, intervals and recipients can be selected freely.
- **Key system documents:** Data sheets, service reports, operating instructions and other documentation are stored on a system-specific basis and are available at any time.



## SAFETY AND FUTURE-PROOFING

- **Role and rights system:** User rights can be assigned on an individual basis, ensuring clear responsibilities and secure access.
- **Continuous development:** Users benefit continuously from new features, optimisations and enhancements to the platform.
- **Prepared for future NIS2 and CRA security regulations:** ScheuchConnect complies with EU requirements for cybersecurity and resilience.

## CONTACT

If you have any questions or would like further information, please contact our After Sales Team.

Phone +43 / 7752 / 905 – 8905  
 E-Mail [aftersales@scheuch.com](mailto:aftersales@scheuch.com)  
 Web [scheuch-industrial-solutions.com/service/](https://scheuch-industrial-solutions.com/service/)

Despite careful processing, all information is provided without guarantee – liability is excluded. Copyright © Scheuch GmbH. All rights reserved. Errors and omissions excepted. 2026/03-EN Publisher: Scheuch GmbH, 4971 Auzolzmunster