



scheuch
TECHNOLOGY FOR CLEAN AIR

AFTERSALES MODERN INDUSTRIAL AUTOMATION SOLUTIONS

ENHANCED PERFORMANCE ACHIEVED THROUGH
STATE-OF-THE-ART AUTOMATION SYSTEMS.

THE OPTIMUM SOLUTION FOR EVERY APPLICATION:

Discover our industrial automation solutions by the latest automation system generation from Siemens: SIMATIC TIA-Portal. Powerful controller and operator panels with innovative touch-technology.

Old automation platforms have reached or are about to reach end of life, meaning that new spare parts will no longer be available.

To ensure that your operations continue to run smoothly, avoid downtimes and extend the lifetime of your plant, we recommend retrofitting to current automation platform/generation – for simpler handling and a worry-free future.



- End of life
Operator panels
- OP7
 - OP77A/B
 - TP17x
 - TP27x
 - MP27x
 - MP37x
 - Software ProTool / WinCC flexible

- End of life
controller
- SIMATIC S5
 - SIMATIC S7-200
 - SIMATIC S7-300/400
- Meaning „End of life“?
- New parts no longer for purchase
 - Difficult spare part availability
 - No/difficult possibility to repair

BENEFITS:

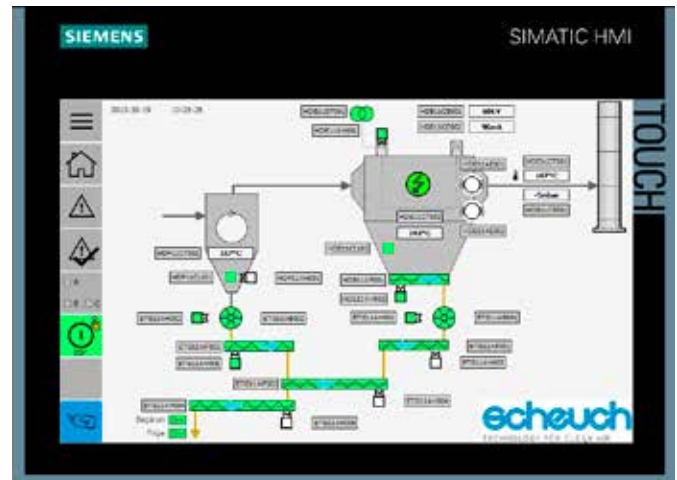
- High spare part availability, many items on stock
- Remote maintenance, Remote-View
- Minimize unscheduled shutdowns
- Increase lifetime of the plant
- Faster, more flexible troubleshooting
- Straightforward conversation
- Engineering software able to run on current operating systems

Bezeichnung / Type Specification / Type			
Fabr. Nr. / Baujahr Serial number / Year			
Klassifizierung Classification			
Zertifikat Nr. Certification no.			
Zone Zone	EN 1127-1	innen inside	außen outside
max. Oberflächentemperatur max. surface temperature			°C

Scheuch GmbH
A-8971 Aurostinsdorf, AUSTRIA

CE

0064708



CONTACT

For more information on the services offered, please contact our aftersales team.

For a detailed quotation, please provide serial or order number of your plant(s). You can find this information on the identification plate on the individual components.

Phone: +43 / 7752 / 905 – 8905
E-Mail: aftersales@scheuch.com
Web: scheuch-industrial-solutions.com/service/

